

We are the Portland Grower's Alliance

The Portland Grower's Alliance is a new social enterprise helping beginning farmers to market and distribute fresh produce. We are a collaborative effort between Mercy Corps Northwest's refugee agriculture project and Grow Portland, a new grassroots urban agriculture organization.

Juan Carlos Delgado



Our goals and values

- Build the local food economy
- Promote ecological growing practices
- Utilize vacant urban land
- Harness the skills and potential of refugees and beginning farmers

Our growing practices

We use only natural and organic growing practices. This means that we use no synthetic or harmful pesticides, herbicides or fungicides. We use compost and cover crops to build the soil. These natural practices enhance flavor, the environment and our health.

Refugees and beginning farmers

Around 1000 refugees are resettled to Portland each year from all over the world including Africa, Asia and the former Soviet Union. Many have limited business education, but come with some growing experience along with the desire to learn and work hard. Mercy Corps Northwest provides the land, supplies, and training they need. We also assist beginning American farmers to market their products with our Lead Grower Program.

By joining the Growers Alliance CSA, you share the harvest of these farmers. You cultivate the potential of the local food economy while enjoying delicious produce and increased knowledge of its uses.

Bruce MacGregor



The fine print

Membership fees are non-refundable, but boxes may be transferred to friends or family. Half year shareholders may opt-out of one box; season-long shareholders may opt-out of two boxes (requires notice two weeks prior to the date). Opting-out guarantees a credit equal to the missed box value, usable at the farmers market or bulk veggie purchases. Credits good for 2011 use only. Produce will vary by season and weather conditions.



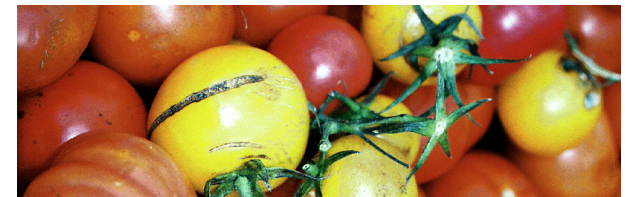
Support Refugees



Buy Local Produce

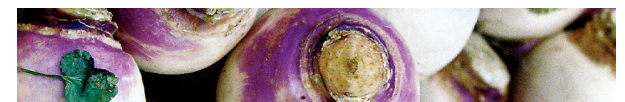


Get the 2011 Portland Grower's Alliance CSA



 **MercyCorps**
Northwest

GROWPORTLAND



What is Community Supported Agriculture (CSA)?

Farmers offer customers a share of the harvest at the start of the season. Members pay upfront and receive a weekly box of fresh vegetables.

How you benefit

- Connect with local, organic agriculture by supporting refugees and beginning farmers.
- Receive ultra-fresh, delicious, and seasonally harvested produce.
- Improve your health by incorporating more fresh produce into your diet.
- Learn about new vegetables and cooking techniques.
- Get kids excited to eat vegetables from “their” farm.

Bruce MacGregor



We're flexible

- Up to two weeks of vacation credit for boxes you can't pick up.
- Option to purchase additional veggies such as tomatoes and potatoes in bulk for processing and/or storing.
- A trade box which allows members to trade with each other to get more of their particular favorites.

What's in the box?

Tomatoes, cucumbers, carrots, lettuce, beets, green beans, broccoli, onions, garlic, squash, herbs, and much more! For full crop list, please visit bit.ly/mcnwcsa

Our boxes also include spray-free berries and sweet corn from our land sponsor, Thompson Farms.

Anu Samarajiva



Choose your size

- Our Regular Size option is a weekly box with 8-10 vegetable varieties, enough to provide for 2-3 people.
- Our Family Size option is a weekly box with 10-15 vegetable varieties, enough to provide for 4 people. Consider splitting with friends or co-workers!

Choose your season

- Half Season (Summer or Fall) - 14 weeks
- Full Season - 28 weeks

Choose your pick-up site

- Mondays at the Mercy Corps NW office (43 SW Naito Pkwy) in Old Town Portland, from 4:30-6 PM.
- Thursdays at the Warehouse Café (3434 SE Milwaukie Ave) in Brooklyn neighborhood, from 4:30-6 PM.

For more information, contact Lauren Morse lmorse@growportland.org or 503-858-0216

2011 Membership Form

1) Choose your Size and Season

Regular Size (feeds 2-3 people)

- Summer: May 23-Aug 22 - \$325
- Fall: Aug. 29-Nov. 28 - \$325
- Full Season: May 23-Nov. 28
\$625 (\$25 savings)

Family Size (feeds 4 people)

- Summer: \$425
- Fall: \$425
- Full Season: \$800 (\$50 savings)

2) Choose your pick-up site

- Mondays at Mercy Corps Northwest
- Thursdays at the Warehouse Cafe

3) Complete the form and mail it in

Name _____

Address _____

City, St, Zip _____

Phone _____

Email _____

Signature* _____

**I agree to all terms listed in this brochure*

Please make checks payable to Grow Portland and mail with completed form to:

Grow Portland,
4065 N. Mississippi Ave. #3
Portland, OR
97227

Thank you!